



# PZTO10 Static Torque Transducer

## Features

- Strain gauge technology
- Range from 5 Nm to 300 Nm
- Accuracy up to 0.03 %fs
- Mild steel with nickel plated treatment  
or 17-4PH construction optional
- Environment protection IP67



## Applications

- Torque wrench and torsion measurement of shaft
- Vehicle testing

## Specifications

Parameter	Units	Data
measuring range	Nm	5, 10, 30, 50, 60, 80, 100, 200, 300
safe overload	%fs	120
ultimate overload	%fs	200
output sensitivity at fs	mV/V	2.0 ±0.2, the standard 4~20mA and 0/1~5Vdc output are available.
zero unbalance	%fso	≤ ±1
combined error	%fs	≤ ±0.03 (option: OIML C1)
creep error (30 min.)	%fs	≤ ±0.03
excitation (supply voltage)	Vdc	10 (typical), 5, ..., 12
max. excitation voltage	Vdc	15
input resistance	Ω	720 ±10
output resistance	Ω	700 ±10
insulation resistance	MΩ	≥ 5000@50 Vdc
storage temp. range	°C	-35 ~ +65
operating temp. range	°C	-20 ~ +65
compensated temp. range	°C	-10 ~ +40
temp. coefficient of sensitivity	%fso/10°C	≤ ±0.02
temp. coefficient of zero	%fso/10°C	≤ ±0.05
load cell body material	/	mild steel with nickel plated treatment ( standard ), 17-4PH ( option )
mechanical interface	/	refer to the dimensions on the datasheets
electrical interface	/	Φ5.7mm, 4-conductor shielded, PVC jacket, length: 13m
environment protection	/	IP67

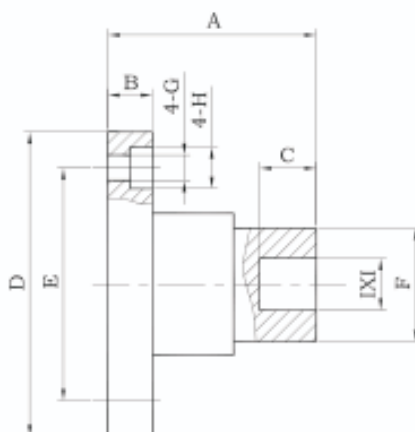
For customized measuring range, please consult Proza.

## Proza Electronic Technology



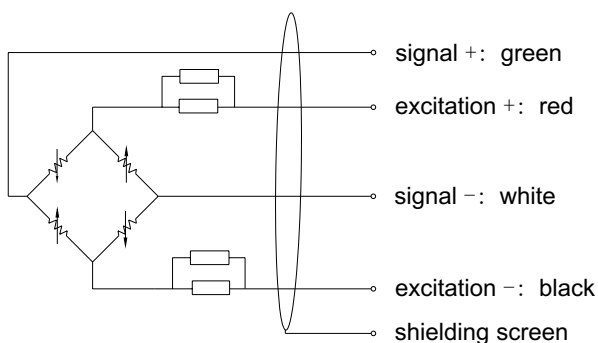
# PZTO10 Static Torque Transducer

## Dimensions



Size(mm) Measuring Range(Nm)	A	B	C	∅D	∅E	∅F	G	H	I
5、10、30 50、60、80	60	10	11	70	55	20	6.5	11	10 <sup>+0.1</sup>
100、200、300	70	15	14	102	78	30	8.5	14	13 <sup>+0.1</sup>
100、200、300	80	16	21	102	78	40	10.5	17	20 <sup>+0.1</sup>

## Electrical connection



## Ordering Guide

### ordering code:

model-measuring range-output sensitivity-accuracy-cable length-(\*customized parameter)

### example:

PZTO10-50Nm-2mV/V-0.03%fs-13m

# Proza Electronic Technology