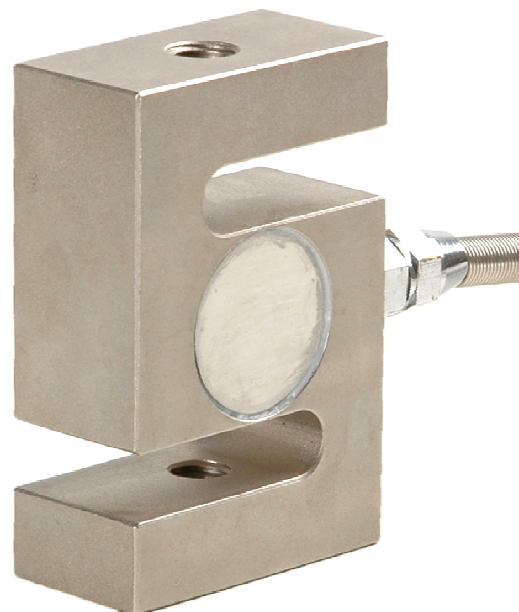




PZW51 S-Beam Load Cell

Features

- S beam design, compression & tension loading possible, easy installation.
- Alloy steel construction.
- Capacity: 0.75t to 30t.
- Sealed by adhesive inside, oil-proof, waterproof and anti-corrosion.
- Suitable for atrocious environment .



Applications

- Crane scale
- Mechanical conversion scale
- Hopper scale
- Electronic weighing devices

Specifications

Parameter	Units	Data
capacity	t	0.75, 1, 2, 3, 5, ,7.5, 10, 20, 30
safe overload	%fs	150
ultimate overload	%fs	200
output sensitivity at fs	mV/V	2.0 ±0.04(standard), 3.0 ±0.04
zero unbalance	%fso	≤ ±1
combined error	%fs	≤ ±0.02 (option: OIML C3)
creep error (30 min.)	%fs	≤ ±0.02
excitation (supply voltage)	Vdc	10 (typical), 5, ..., 12
max. excitation voltage	Vdc	15
input resistance	Ω	360 ±10
output resistance	Ω	350 ±10
insulation resistance	MΩ	≥ 5000@50 Vdc
storage temp. range	°C	-35 ~ +80
operating temp. range	°C	-35 ~ +80
compensated temp. range	°C	-10 ~ +40
temp. coefficient of sensitivity	%fso/10°C	≤ ±0.02
temp. coefficient of zero	%fso/10°C	≤ ±0.03
load cell body material	/	alloy steel
mechanical interface	/	refer to the dimensions on the datasheets
electrical interface	/	Φ5.7mm, 4-conductor shielded, PVC jacket, length: 3.5m
environment protection	/	IP66(standard), IP67

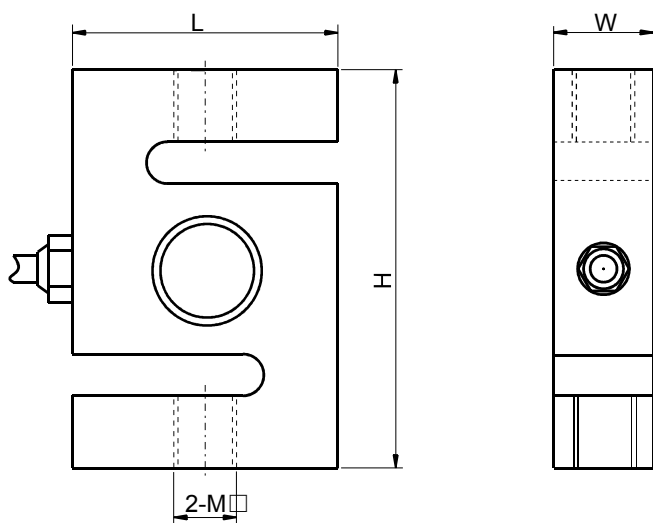
For customized capacity, please consult Proza.

Proza Electronic Technology



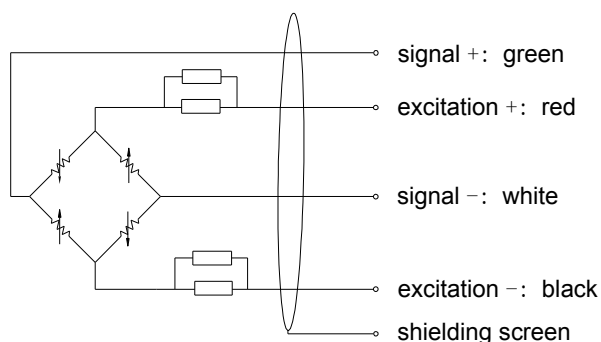
PZW51 S-Beam Load Cell

Dimensions



Capacity (t)	L	H	W	M
0.75	50.8	76.2	19.1	M12 x 1.75
1	50.8	76.2	25.4	M12 x 1.75
1.5	50.8	76.2	25.4	M16 x 1.5
2, 3	76.2	108	31.8	M20 x 1.5
5	76.2	108	37	M24 x 2
7.5	100	139.7	37	M24 x 2
10	125.5	177.8	50.8	M30 x 2
20	140	170	81	M42 x 3
30	190	230	80	M42 x 3

Electrical connection



Ordering Guide

ordering code:

model-capacity-output sensitivity-accuracy-thread-cable length-(*customized parameter)

example:

PZW51-5t-2mV/V-0.02%fs-M24-3.5m

Proza Electronic Technology