



PZW60 Shear Beam Load Cell

Features

- Single shear beam design, easy for installation.
- Alloy steel construction, surface nickel plated treatment.
- Capacity: 0.3t to 10t .
- Sealed by adhesive inside, oil-proof, waterproof and anti-corrosion.
- Suitable for atrocious environment .
- Can be used in hazardous areas.



Applications

- Electronic platform scales
- Hopper scales
- Hanging scales
- Electronic weighing devices

Specifications

Parameter	Units	Data
capacity	t	0.3, 0.5, 1, 2, 2.5, 3, 5, ,7.5, 10
safe overload	%fs	150
ultimate overload	%fs	200
output sensitivity at fs	mV/V	3.0 ±0.04(standard)
zero unbalance	%fso	≤ ±1
combined error	%fs	≤ ±0.02 (option: OIML C3)
creep error (30 min.)	%fs	≤ ±0.02
excitation (supply voltage)	Vdc	10 (typical), 5, ..., 12
max. excitation voltage	Vdc	15
input resistance	Ω	360 ±10
output resistance	Ω	350 ±10
insulation resistance	MΩ	≥ 5000@50 Vdc
storage temp. range	°C	-35 ~ +80
operating temp. range	°C	-35 ~ +80
compensated temp. range	°C	-10 ~ +40
temp. coefficient of sensitivity	%fso/10°C	≤ ±0.02
temp. coefficient of zero	%fso/10°C	≤ ±0.03
load cell body material	/	alloy steel
mechanical interface	/	refer to the dimensions on the datasheets
electrical interface	/	Φ5.7mm, 4-conductor shielded, PVC jacket, length: 3. 5m (0. 25~3t) ; 6m (5~10t)
environment protection	/	IP66(standard), IP67

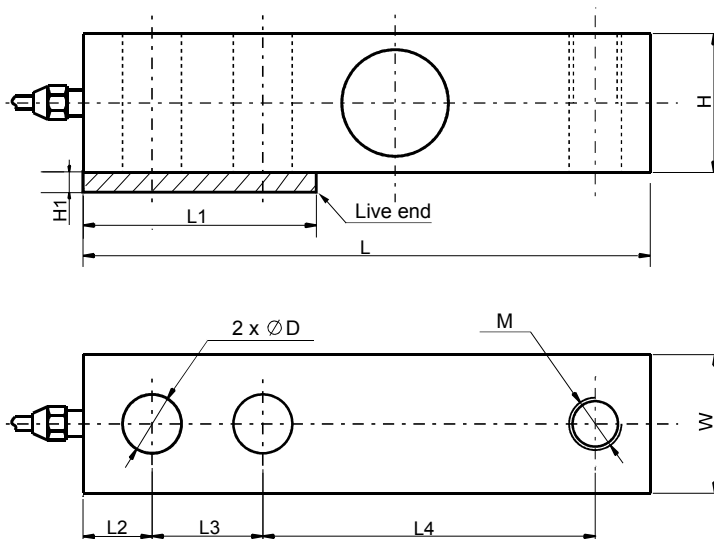
For customized capacity, please consult Proza.

Proza Electronic Technology



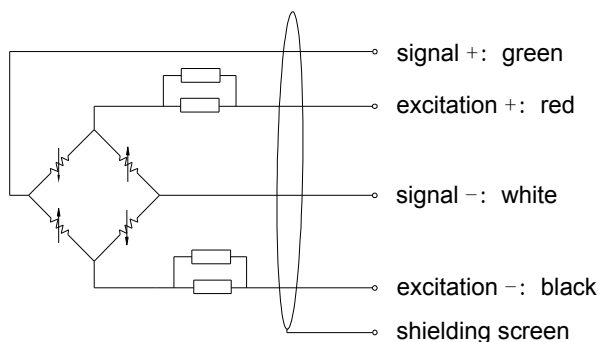
PZW60 Shear Beam Load Cell

Dimensions



capacity	L	L2	L3	L4	H	W	D	M	L1	H1
0.3~2 t	130.0	15.8	25.4	76.2	31.8	31.8	13.5	M12 x 1.75	57	4
2.5~5 t	171.5	19.1	38.1	95.3	38.1	38.1	19.8	M20 x 1.5	76	6
7.5~10 t	222.2	25.4	50.8	120.6	50.8	50.8	26	M24 x 2	108	6

Electrical connection



Ordering Guide

ordering code:

model-capacity-output sensitivity-accuracy-thread-cable length-(*customized parameter)

example:

PZW60-5t-3mV/V-0.02%fs-M20x1.5-3.5m

Proza Electronic Technology