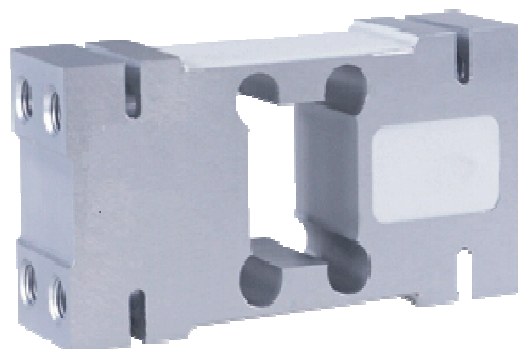




PZW30 Single Point Load Cell

Features

- Single point type, parallel bending beam
- Aluminum alloy material
- Capacity 50kg to 2000kg
- Suggested max. platform size: 1200mm x 1200mm
- Surface anodized treatment, good anti corrosive ability
- Silicon rubber sealing
- Environment protection: IP65



Applications

- Counting scales
- Hopper scales
- Overhead track scales

Specifications

Parameter	Units	Data
capacity	kg	50, 70, 100, 200, 250, 500, 750, 1000, 2000
safe overload	%fs	150
ultimate overload	%fs	200
output sensitivity at fs	mV/V	2.0 ±0.2
zero unbalance	%fso	≤ ±2
combined error	%fs	≤ ±0.02 (option: OIML C3)
creep error (30 min.)	%fs	≤ ±0.02
excitation (supply voltage)	Vdc	10 (typical), 5, ..., 12
max. excitation voltage	Vdc	15
input resistance	Ω	405 ±10
output resistance	Ω	350 ±10
insulation resistance	MΩ	≥ 5000@50 Vdc
storage temp. range	°C	-35 ~ +60
operating temp. range	°C	-20 ~ +60
compensated temp. range	°C	-10 ~ +40
temp. coefficient of sensitivity	%fso/10°C	≤ ±0.02
temp. coefficient of zero	%fso/10°C	≤ ±0.02
load cell body material	/	aluminum alloy
mechanical interface	/	refer to the dimensions on the datasheets
electrical interface	/	Φ6.2mm, 6-conductor shielded, PVC jacket, length: 3m
environment protection	/	IP65

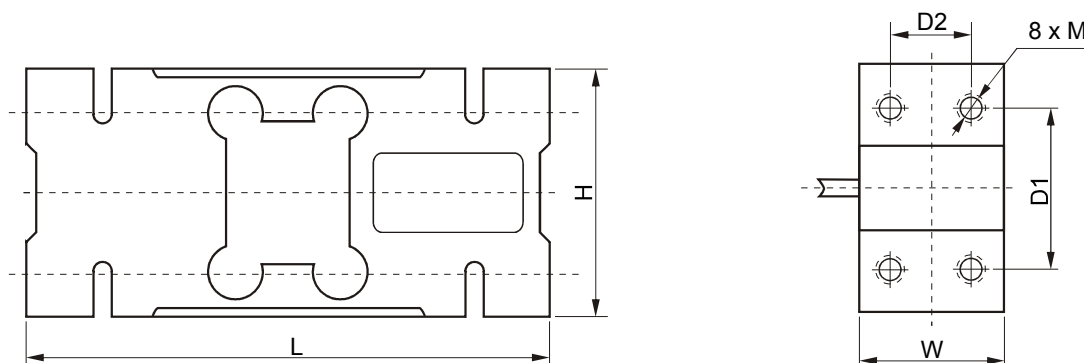
For customized capacity, please consult Proza.

Proza Electronic Technology



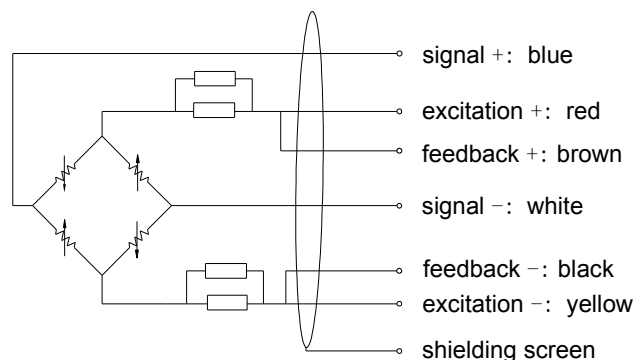
PZW30 Single Point Load Cell

Dimensions



Capacity (kg)	L	H	W	D1	D2	M
50~200	156	75	44	50	24	M12 - 7H
250, 500	146	95	60	70	36	M12 - 7H
750~2000	176	125	76	95	46	M16 - 7H

Electrical connection



Ordering Guide

ordering code:

model-capacity-output sensitivity-accuracy-thread-cable length-(*customized parameter)

example:

PZW30-500kg-2mV/V-0.02%fs-M12-3m

Proza Electronic Technology